

Protected Areas and Gold Mining

Peru's perspective



FRANKFURT
ZOOLOGICAL
SOCIETY

Mining in Peru

	Productive capacity	Concession area	Minimum production	Other considerations
Great Scale Mining	+ 5000 t/day	+ 2000 ha	1 TU per year and per ha of the concession (metals)	-
Medium Scale Mining	From 350 up to 5000 t/day			-
Small Scale mining	Up to 350 t/day	Up to 2000 ha	10% of a TU per year and per ha of the concession (metals)	-
Artisanal mining	Up to 25 t/day	Up to 1000 ha	5% of a TU per year and per ha of the concession	Use of manual methods and/or basic equipment

Cooperación, 2019 and Law N° 27651 (modified by DL N° 1040, N° 1100 and N° 1101)

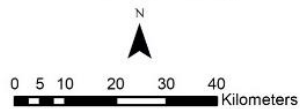
Illegal and Informal Mining in Peru

Illegal Mining	Informal Mining
Using equipment and machinery that does not follow the characteristics of the mining activity that it develops (SM or AM)	
Without complying with the requirements of the administrative, technical, social and environmental regulations governing these activities	
Carried out in prohibited areas (PA, water bodies)	Carried out in areas where mining is not prohibited and by a natural or legal person or group of organized people that have initiated the formalization process

D.L. N° 1105 and
D.L. N° 1107

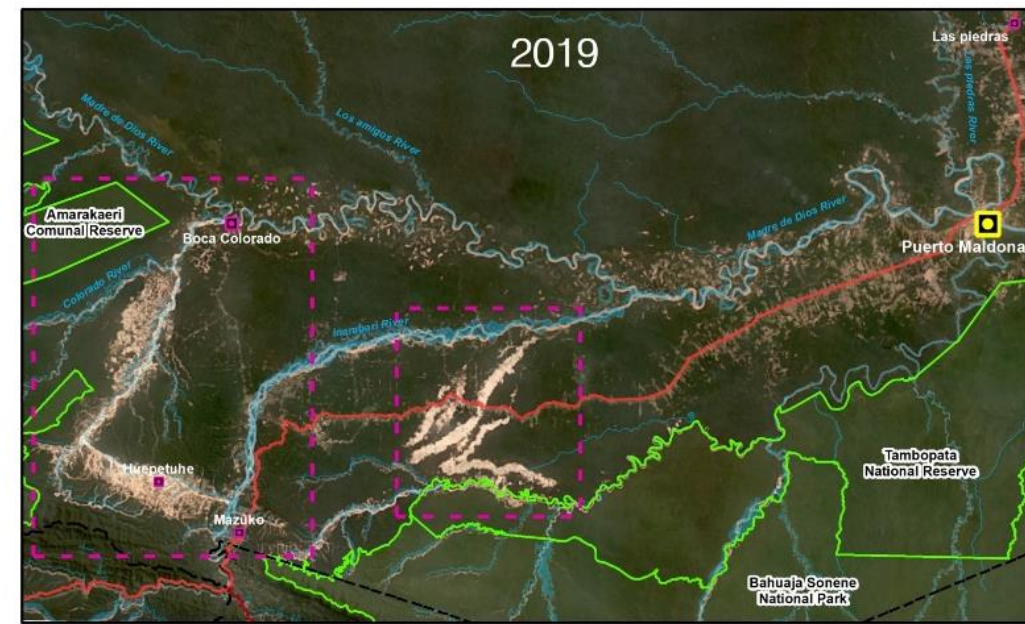
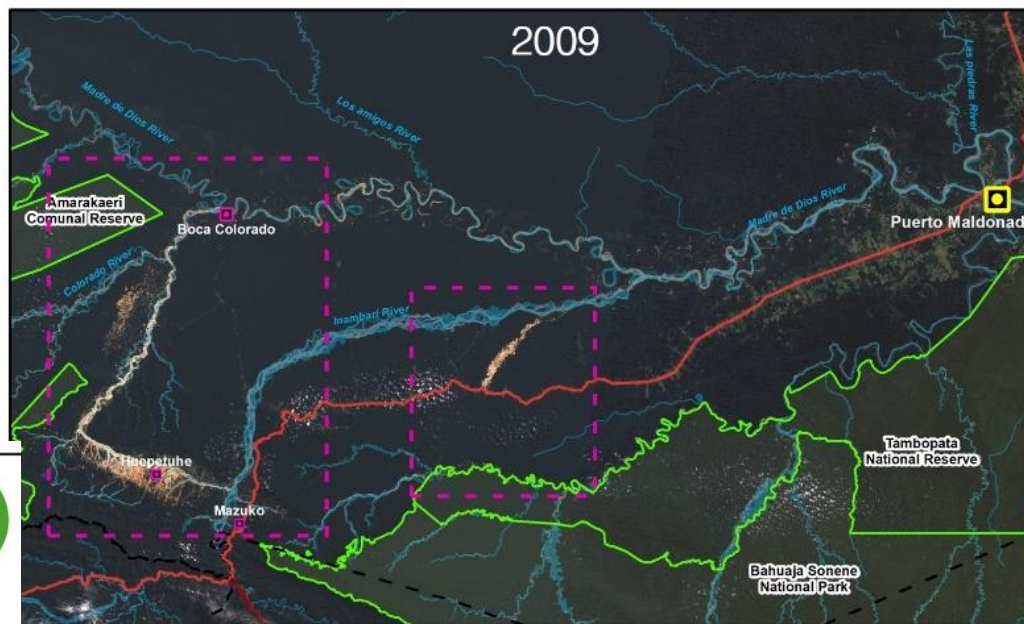
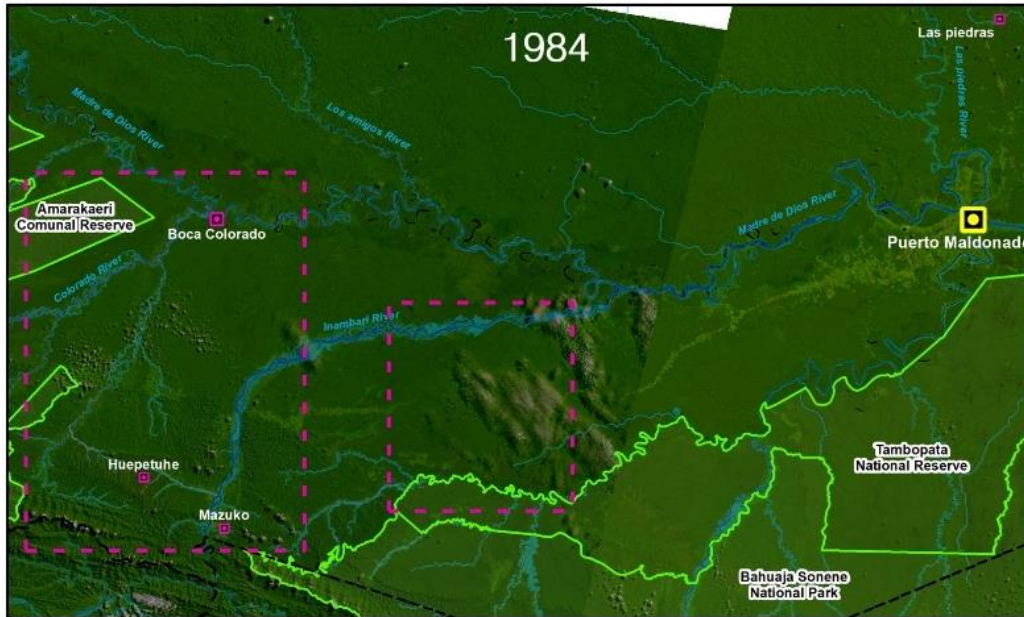


Areas with the highest growth in illegal and informal alluvial gold mining



LEYEND

- Regional Capitals
- Villages
- Main rivers
- Interoceánica Sur Road
- Protected Natural Areas



LAND USE COVER CHANGE BY ILLEGAL AND INFORMAL ALLUVIAL GOLD MINING

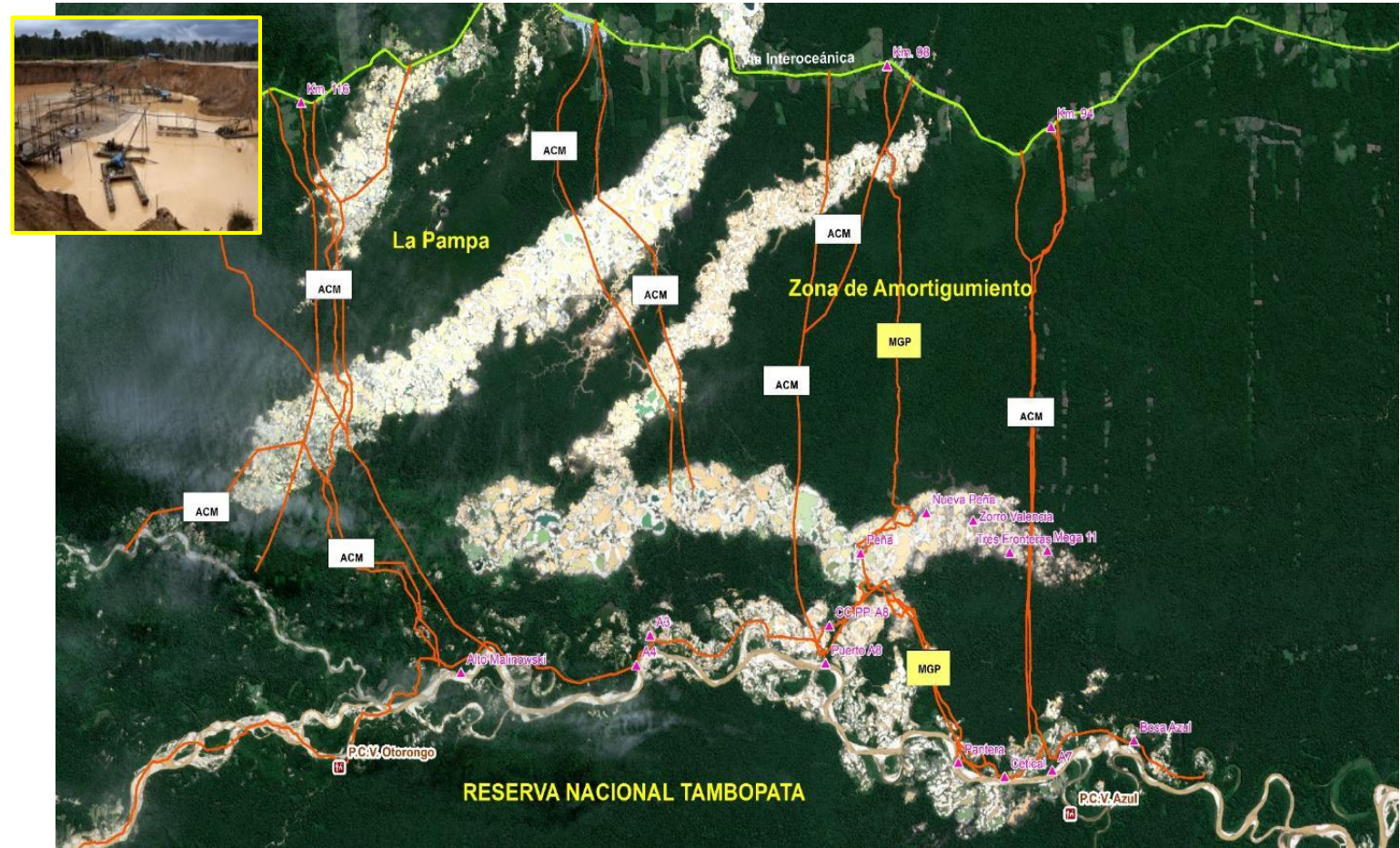
Coordinate system:
Date: WGS 84 UTM Zona 19S
September 2019
Source: SERNANP, IGN, Landsat and Planet satellites



**FRANKFURT
ZOOLOGICAL
SOCIETY**

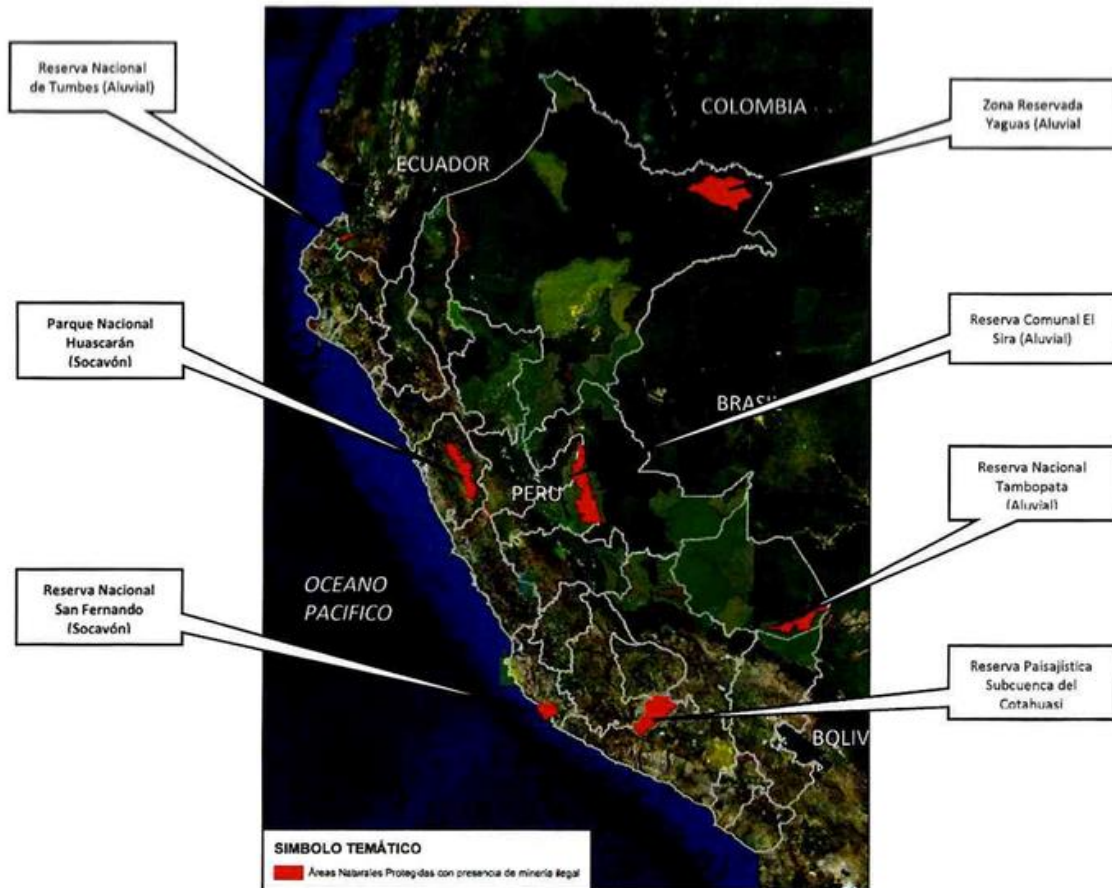
Response to illegal mining in Madre de Dios

- **Since 2010**
Numerous military operations and raids
- **2016**
Invasion of Tambopata National Reserve, affecting 759 ha
- **Strategy to Fight Illegal Mining in Protected Areas**
SERNANP



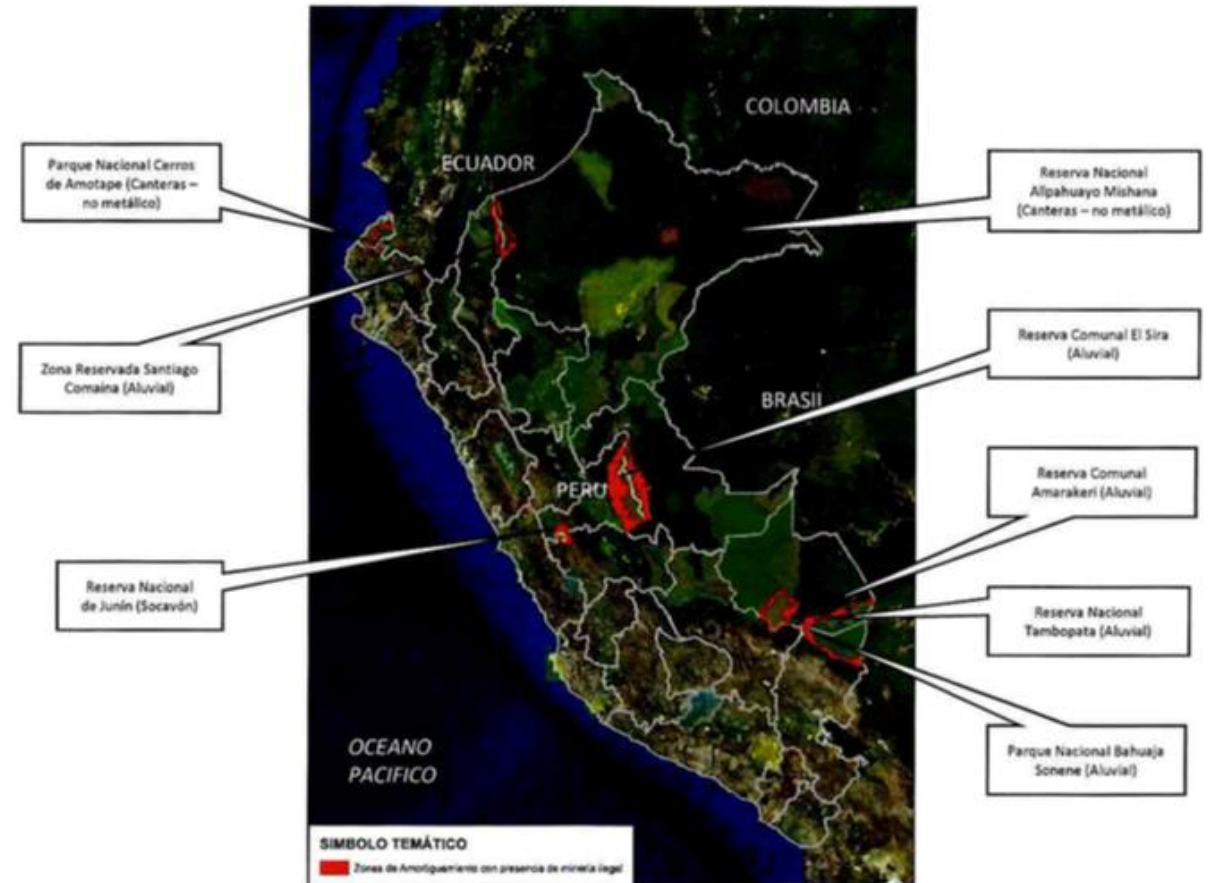
Protected Areas with presence of Mining

Imagen 01 Áreas Naturales Protegidas con presencia de minería ilegal



Fuente: SERNANP, 2017

Imagen 02 Zonas de Amortiguamiento de ANP con presencia de minería ilegal



Fuente: SERNANP, 2017

In 2017: 7 PA with illegal mining and 8 in their buffer zones

Impacts of gold mining

- Deforestation - Carbon stock loss
- Biodiversity loss
- Desertification
- Mercury emissions
- Child labour
- Human trafficking
- Organized crime



Strategic Actions

1

Identify actions and logistic support for the law enforcement of Illegal Mining in PA

3

Development of sustainable economic activities

2

Implement actions that will mitigate illegal mining from going into PA

4

Recover degraded areas due to illegal mining within the PA

Stakeholders identified by SERNANP



Response to illegal mining in Protected Areas



1

PA WITH ILLEGAL MINING IDENTIFIED

2

RELATED IMPACTS IDENTIFIED

Environmental impacts, biodiversity loss, organized crime, human trafficking, child labor, etc

3

STRATEGIC ACTIONS DEFINED

4

STAKEHOLDERS IDENTIFIED

Government agencies, NGOs, academia, international cooperation, etc

Response to illegal mining in Protected Areas



Multisectoral Commission to monitor government's actions against illegal mining (created 2012)

- PCM
- MINAM
- MINCU
- Ministerio de Defensa
- Ministerio de Relaciones Exteriores
- Asamblea Nacional de GORE
- MINEM
- MINAGRI
- Ministerio del Interior
- MEF
- SUNAT

Response to illegal mining in Protected Areas



Operación “Mercurio 2019” permitirá restituir el principio de autoridad en La Pampa

Nota de Prensa

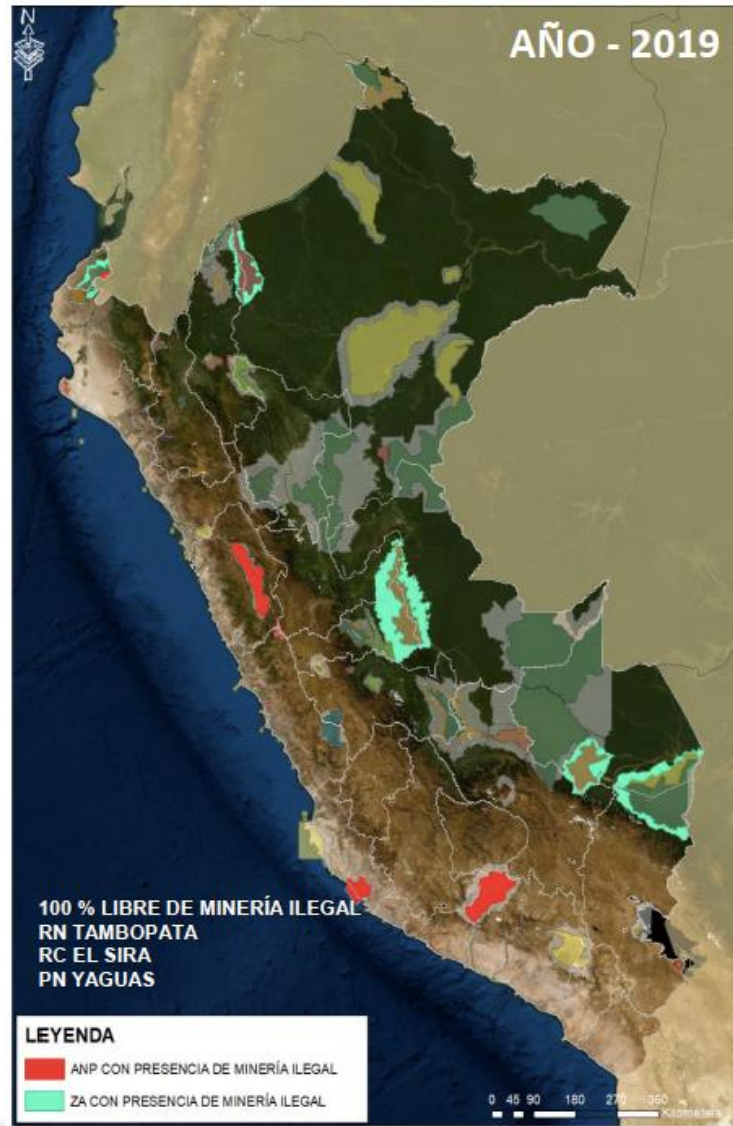
Ministro del Interior destaca valiente decisión del Gobierno del presidente Vizcarra de intervenir ante minería ilegal en Madre de Dios.



Holistic approach:

- Law enforcement
- Development of formal economic activities
- Social problems

Protected Areas with presence of Mining



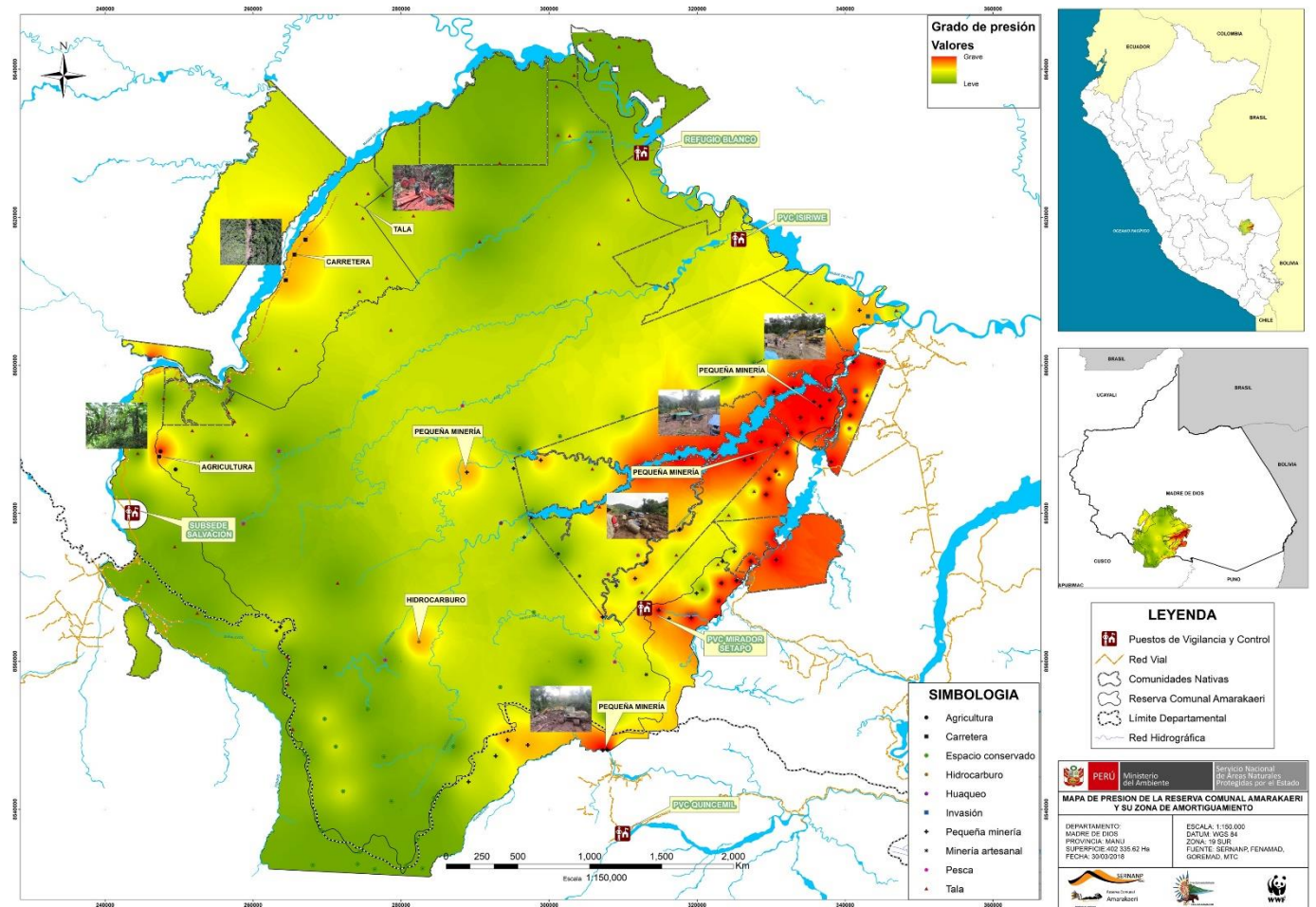
2019: 4 PA with illegal mining and 6 in their buffer zones

➔ By 2021, no illegal mining in PA and buffer zone

➔ More military operations to come (Bahuaja Sonene, Amarakaeri, etc)

Challenges

- **Invasion of other areas**
Protected Areas and other pristine forest under threat
- **Coordination among government agencies**
Economic activities still in formulation process
- **Long run investment**
Ideas that take time, resources, capacity building
- **Impacts previously not taken into account**
Ecosystem integrity in danger



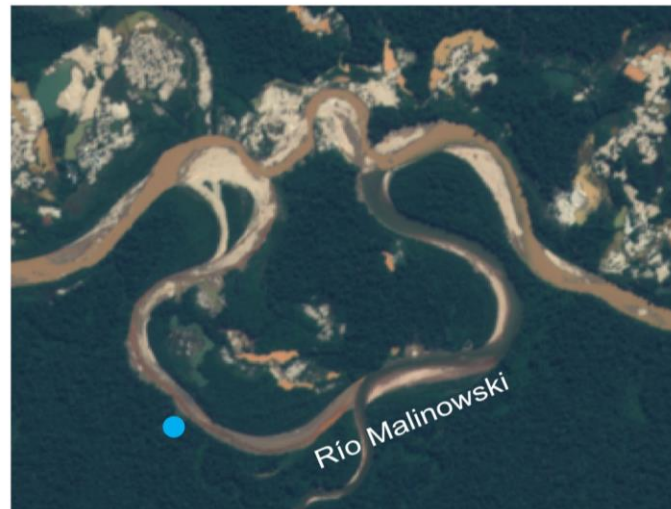
Challenges

Malinowski River Course Modification

DICIEMBRE 2015



JUNIO 2016



SETIEMBRE 2019



● Azul Control Post



Thank You