

# Monitoring of the Parc amazonien de Guyane's territory

## The monitoring of illegal goldmining

RENFORESAP Workshop 12/02/20



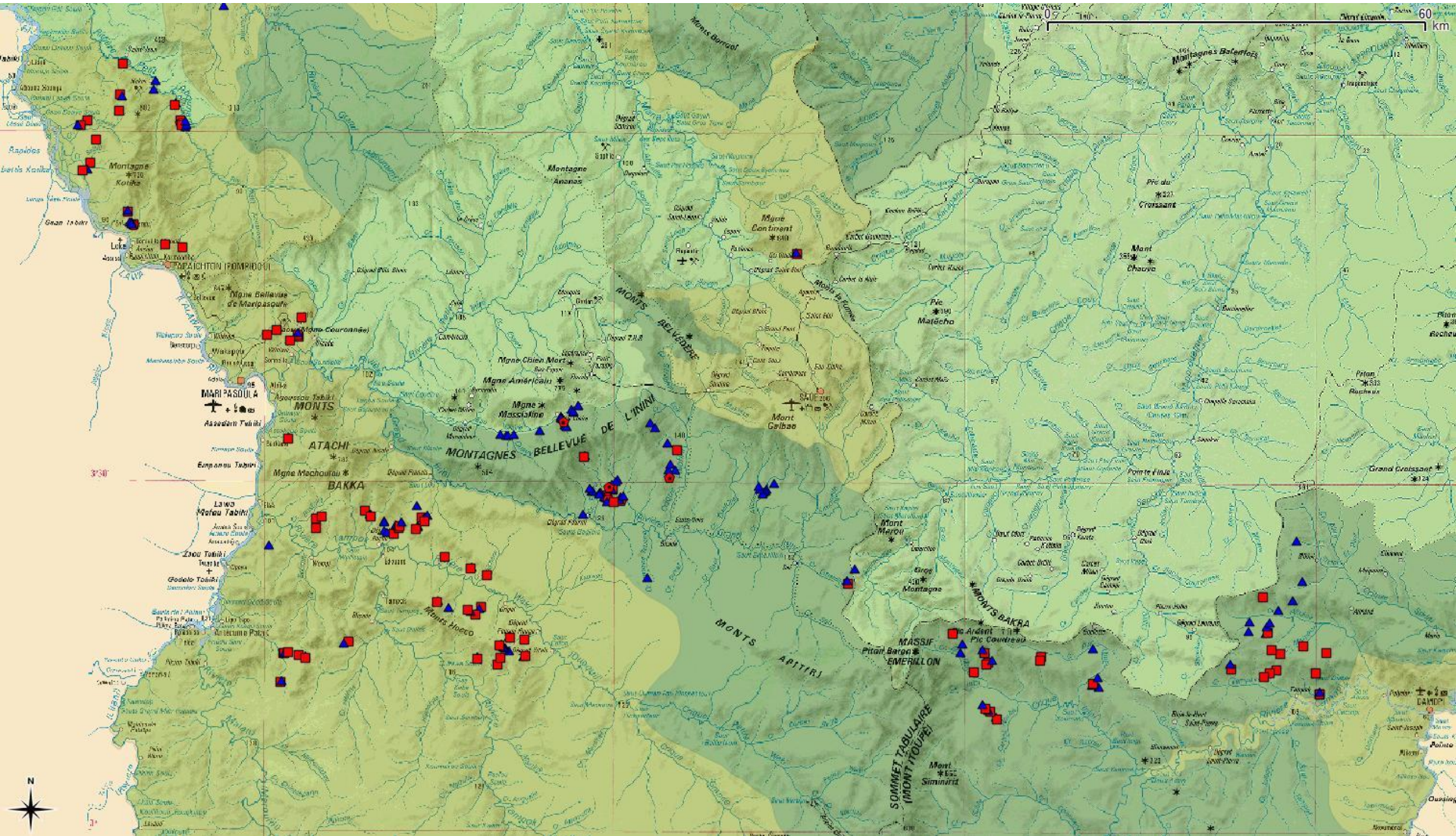








# March 2017

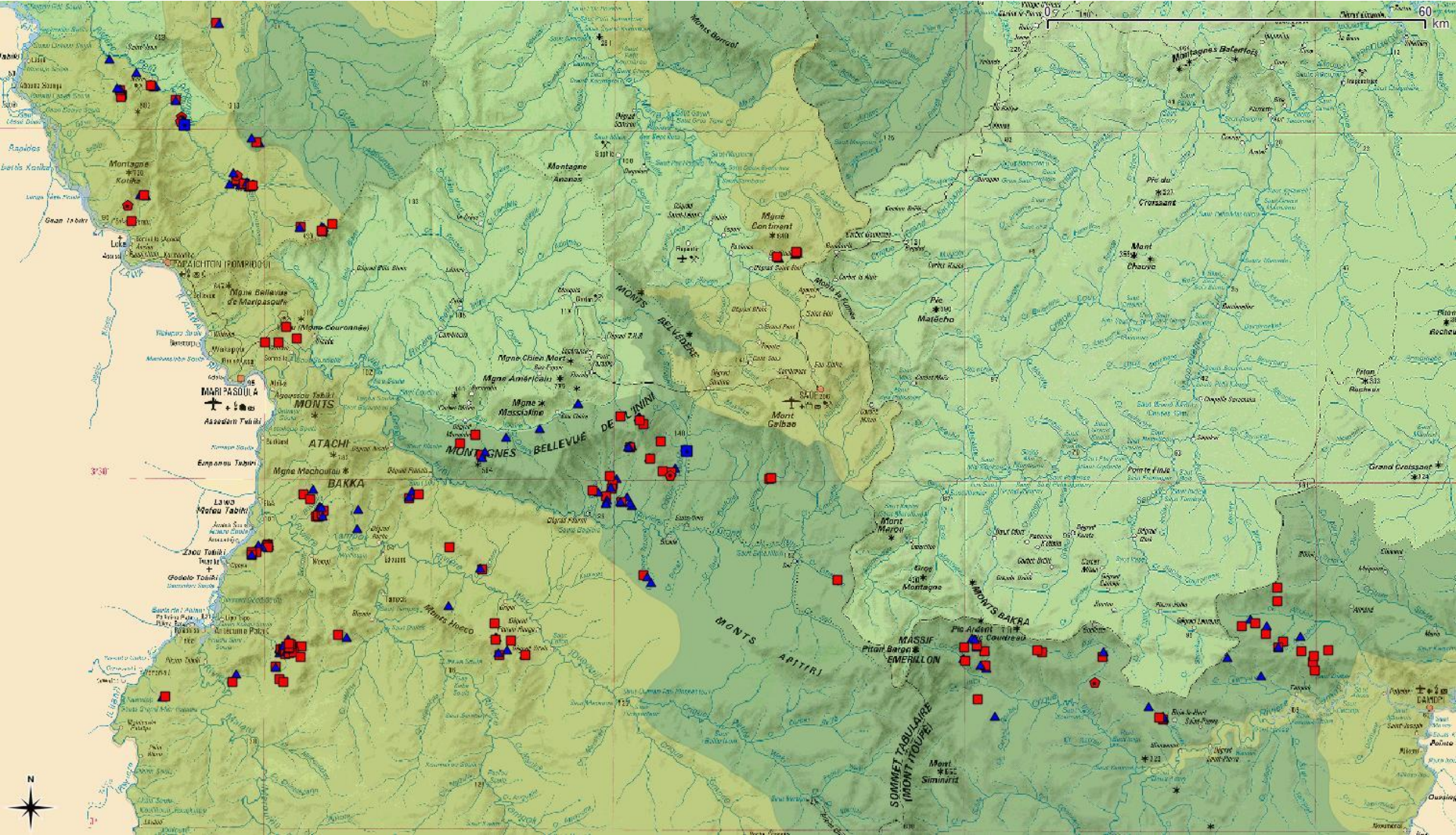




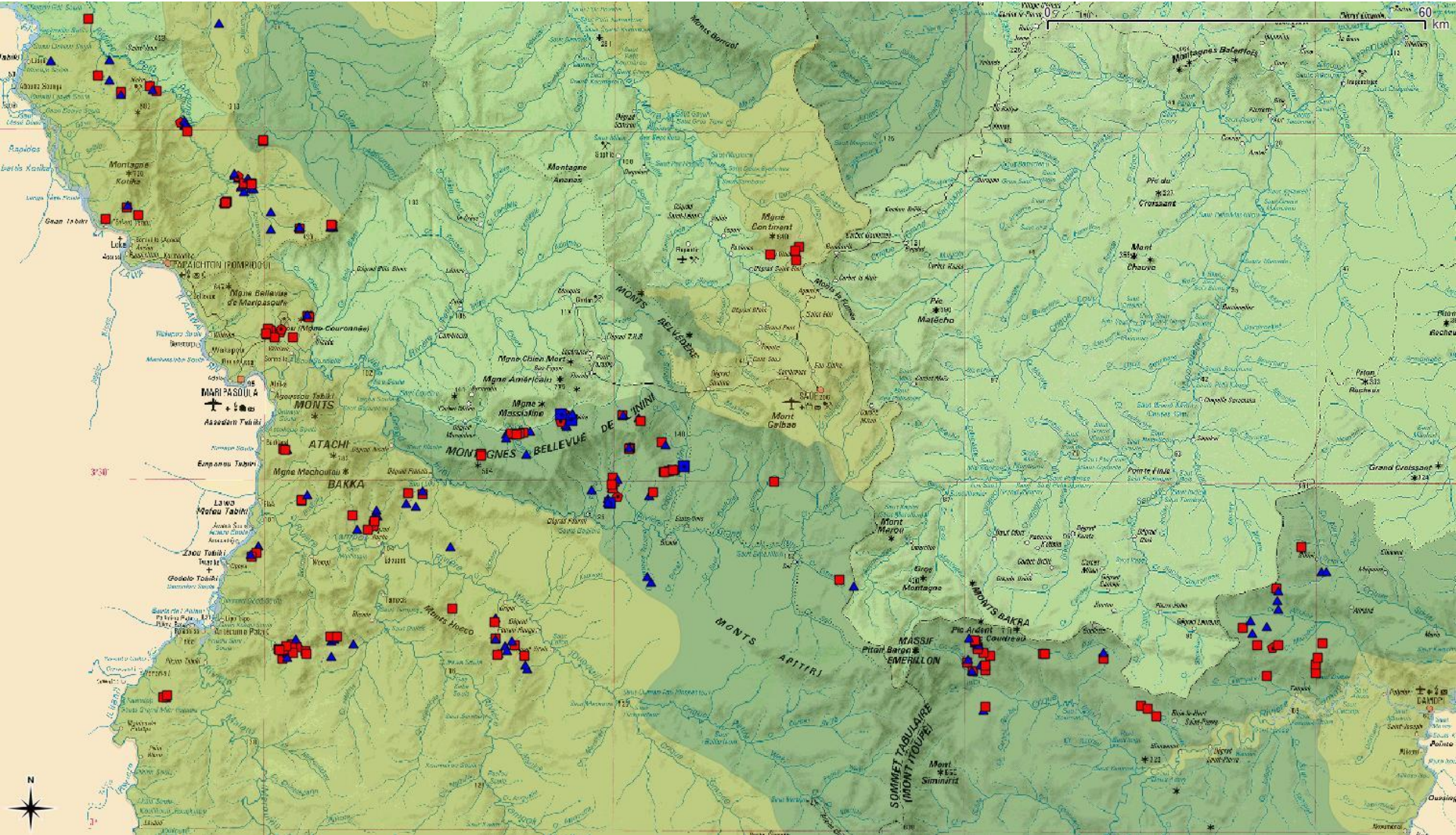




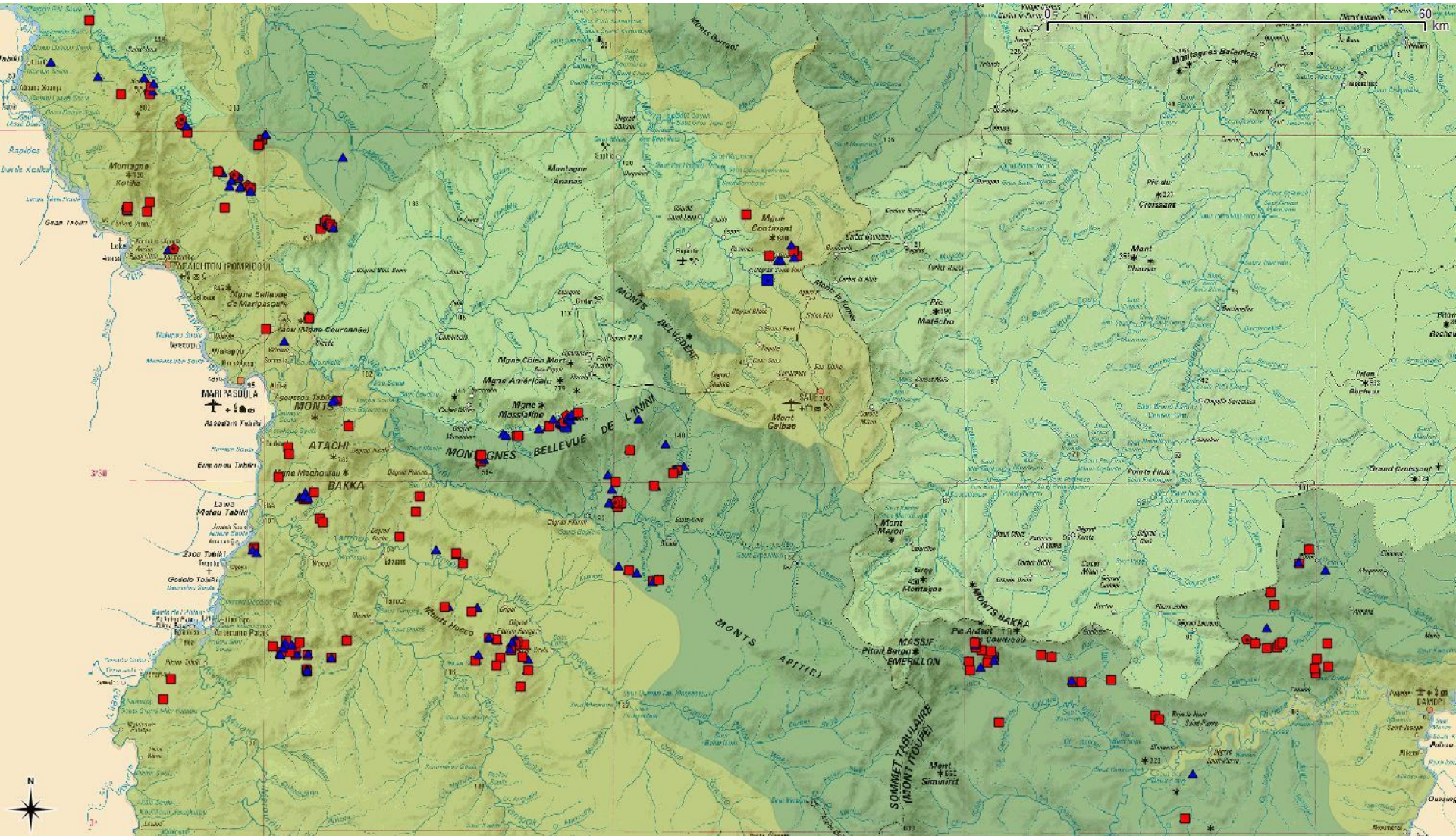
# August 2018



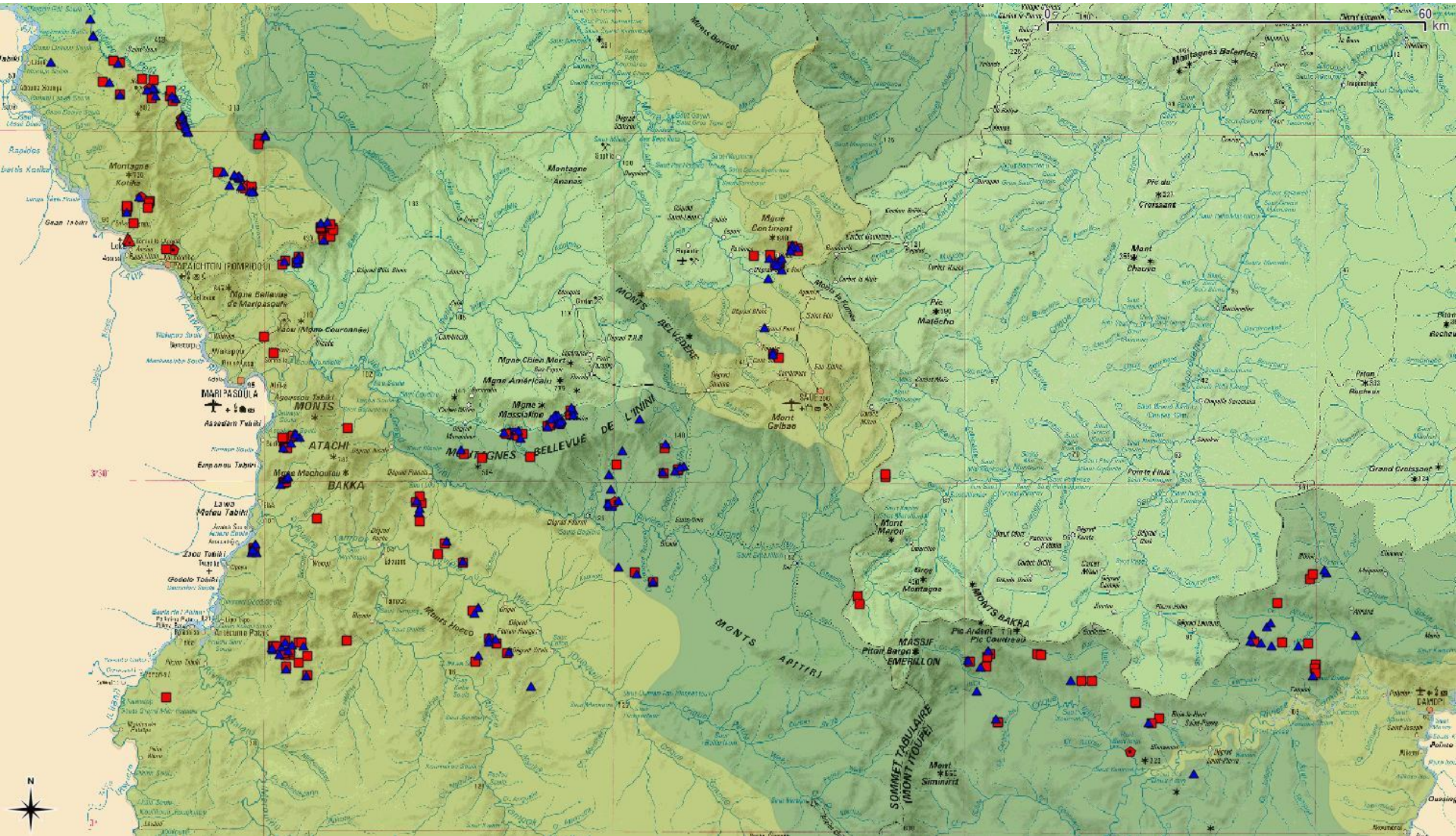
# January 2019



# September 2019



# January 2020





# The national park struggles against illegal goldmining

- **The national Park is invested in the struggle against illegal goldmining and in its monitoring**
  - Mobilisation to change the law and extend the officers prerogatives
  - Participation in the campaigns of destruction of illegal sites
  - 15 sworn agents (armed)
  - 80 à 100 missions annually with gendarmes, militaries or autonomously



# The national park struggles against illegal goldmining

A very particular commitment for sworn agents of national parks

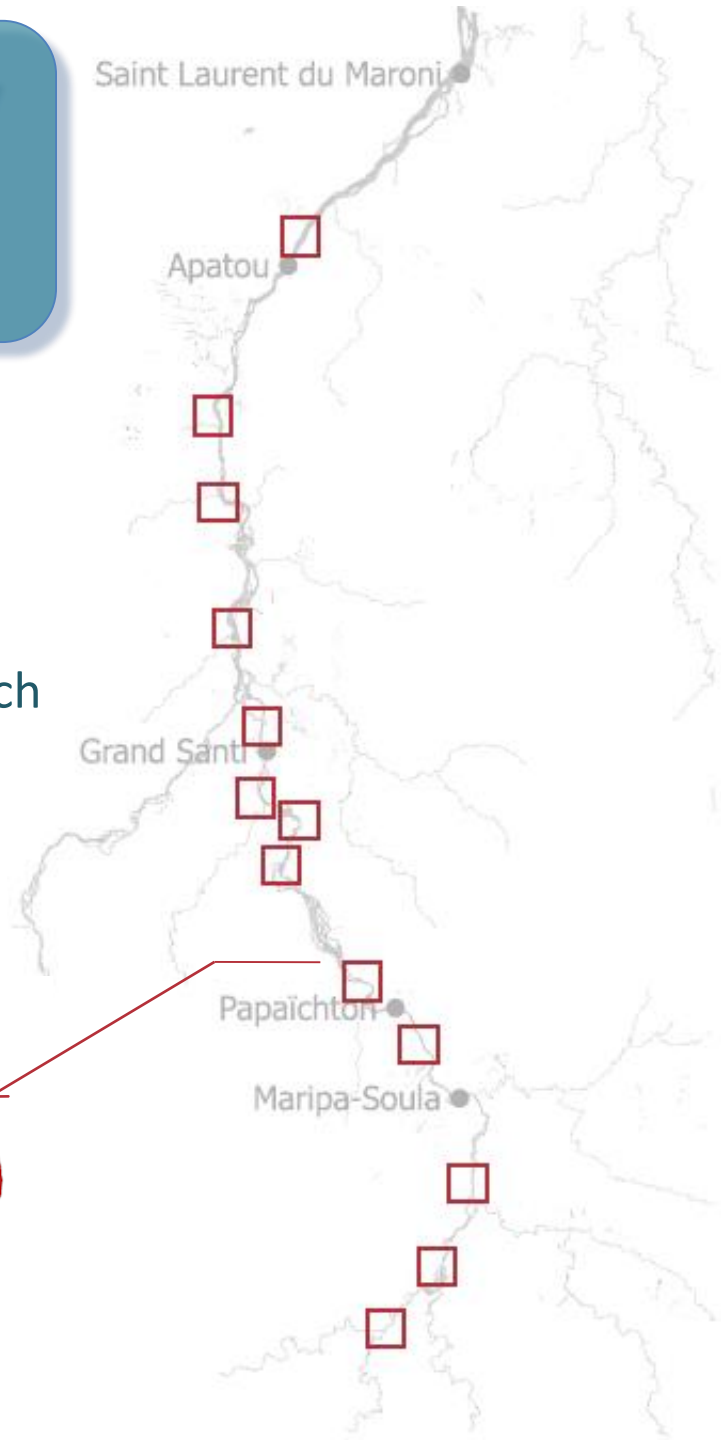


# Focus on the observatory of turbidity of the upper Maroni river implemented by the national park

- **Objectives**

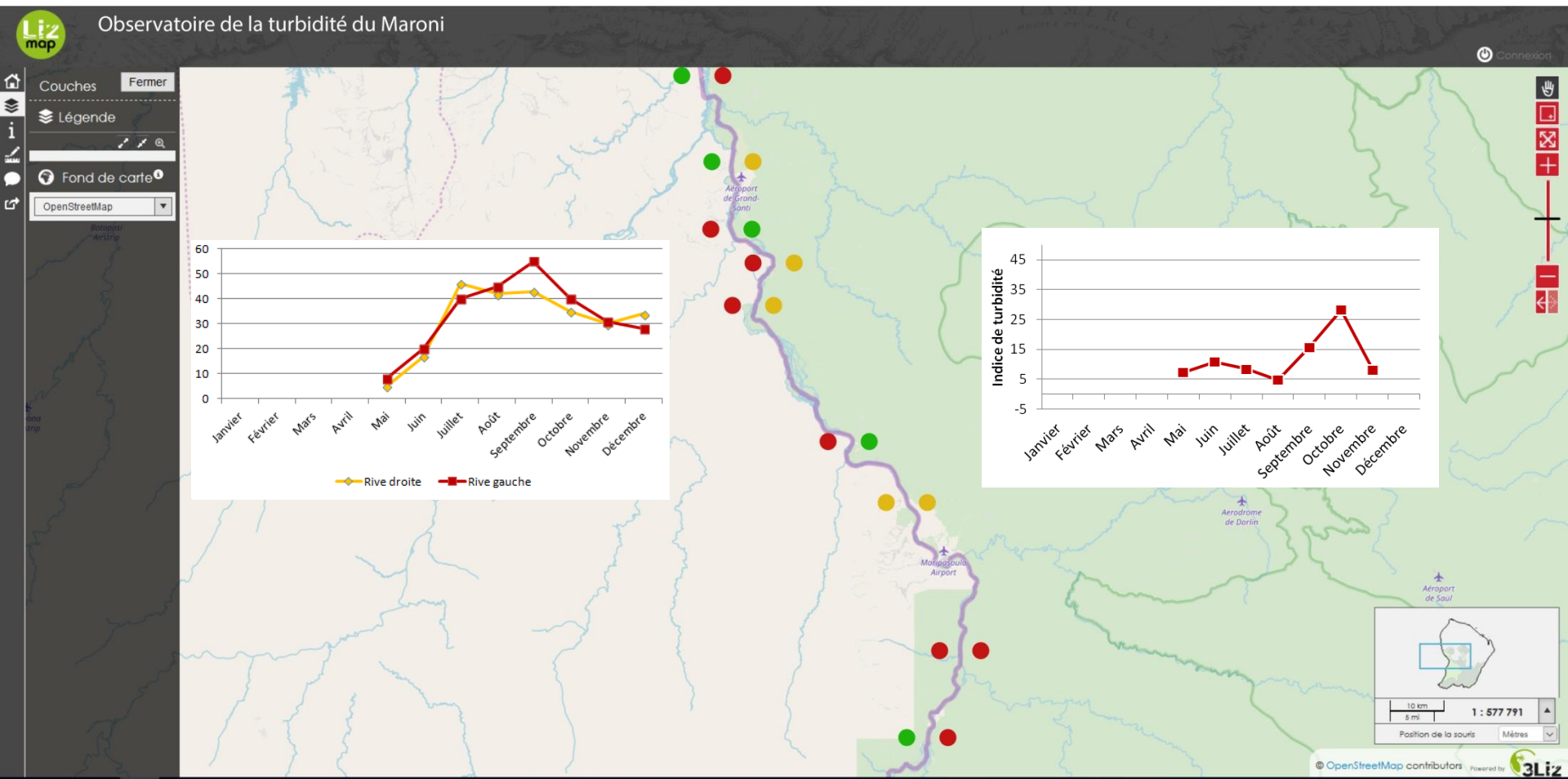
- Analyse and make visible the consequences of goldmining
- Compare the levels of turbidity : between the french and the surinamese bank / between the upper and lower part of the main rivers which flow into the Maroni/Lawa
- Allow any citizen to have easy access to this data

**Step 1 : 14 “sites” have been selected**





# Web-based interface on the National Park website



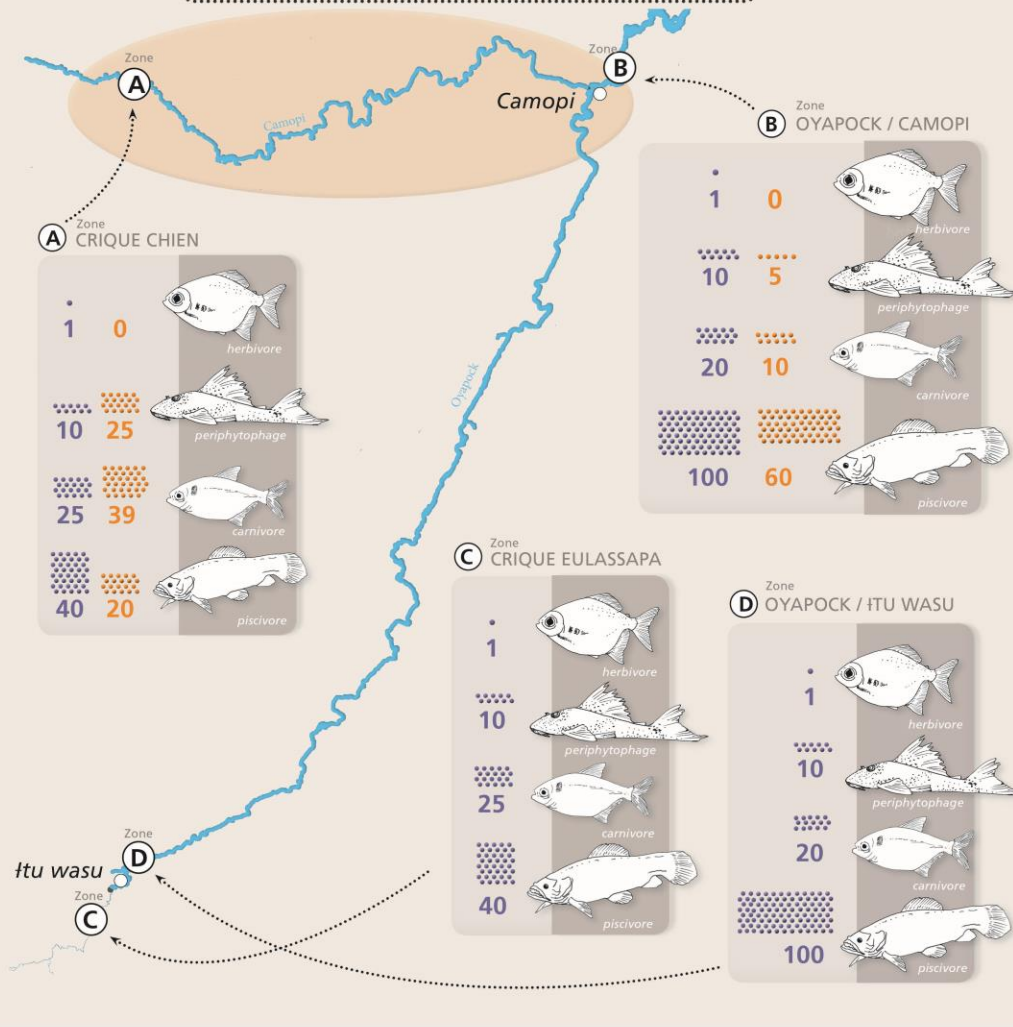
# QUELS MERCURES DANS LES POISSONS ?

X. Maury, B. Bachel, P. Gonzalez, A. Feuillet, M. Marel, A. Lagarde, R. Vigorzi, C. Bonaldi, L. Maguic



## QUANTITÉ DE MERCURE NATUREL ET DE MERCURE LIÉ À L'ORPAILLAGE DANS LES POISSONS

Mercure naturel  
Mercure lié à l'orpailage



# The national park contributes to the monitoring of aquatic ecosystems

- **Monitoring of some key species**

- Giant Otter (*Pteronoura briliensis*):

- Good indicator of the water turbidity (regional protocole)
- Measure the reconquest of formerly mined sites

- Tapir (*Tapirus terrestris*):

- Indicator of the hunting pressure, not sensitive to water turbidity
- Try to evaluate hunting pressure in mined areas



