



# Monitoring: How protected areas respond to illegal and legal gold mining

Micah Davis  
Head Ranger  
Iwokrama International Centre

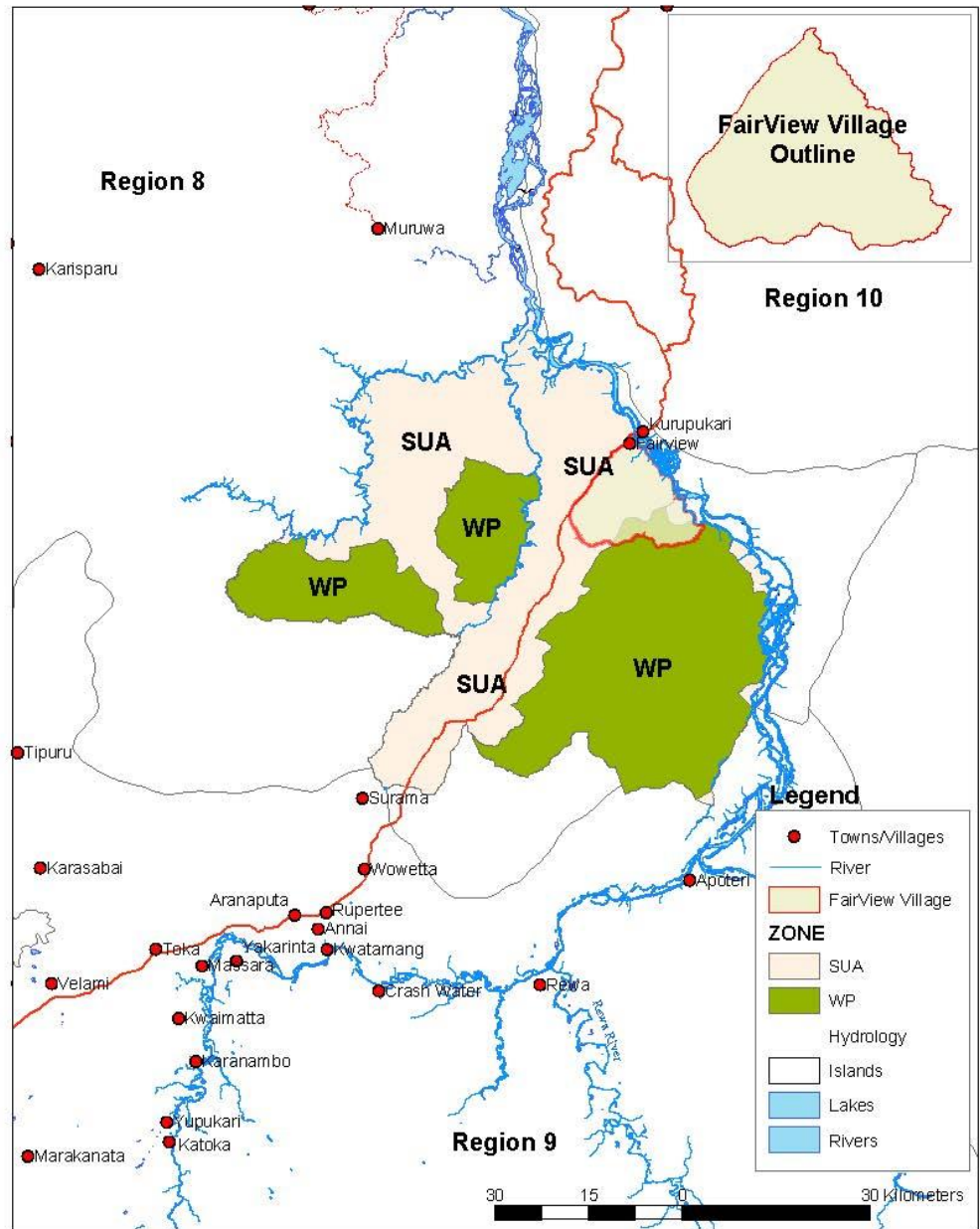
# Why Monitor

- Management Plan of the Iwokrama Forest

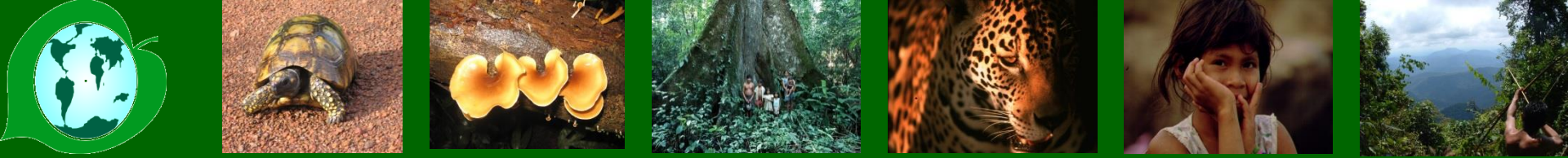
## Goal

- *To ensure the sustainable management of the Iwokrama Forest*
- *To ensure that benefits from management are equitably distributed among all stakeholders*

## IWOKRAMA FOREST And NEIGHBOURING COMMUNITIES







# Where are we monitoring

- Road
- River
- Forest
- Operations
- Communities

