

Overview of the Gold Mining Sector in Guyana



RENFORESAP
Regional workshop
on
Strategies against
the threats from
illegal gold mining
in the protected
areas of the
Guyana's

QUINCY THOM
SENIOR ENVIRONMENTAL OFFICER
GUYANA GEOLOGY & MINES COMMISSION – GGMC
12 FEB, 2020





BACKGROUND, GGMC WHO ARE WE?

The Guyana Geology and Mines Commission (GGMC) was created in 1979 from the Department of Geological Surveys and Mines which itself was the successor to the Geological Survey of British Guiana.

Currently GGMC is divided into the following technical divisions:
Geological Services, Mines, Environment, Petroleum, and Land Management



History of Mining in Guyana

- ❖ Historically, mining has been a cornerstone of the Guyanese economy, making a significant contribution to job creation, employment, and interior development.
- ❖ Mining also provides an estimated 18,000 jobs through direct employment, and an estimated additional 30,000 or so jobs through service activities such as air, water and road transport, suppliers of mining equipment, spares, rations, and mechanical repairs and service of mining equipment, machinery and vehicles (indirect employment).
- ❖ Today, through our gold, diamond, bauxite, sand and stone mining operations, and Large Scale mineral exploration and mining, the Mining Industry continues to bring a broad range of benefits to the Guyanese economy and society.

MINING IN GUYANA

SCALES OF MINING – AS DEFINED BY THE MINING AMENDMENT REGULATIONS, 2005



“large scale mine” means a mine which is the subject of a Mining License and from which minimum volume in excess of 1000m³ of material, inclusive of any overburden, is excavated or processed as an aggregate in any continuous twenty-four hour period.

“medium scale mine” means a mine which is the subject of a Mining Permit and from which a volume in excess of 200m³ but less than 1000m³ of material, inclusive of any overburden, is excavated or processed as an aggregate in any continuous twenty-four hour period.

“small scale mine” means a mine which is the subject of a Claim License and from which a volume in excess of 20m³ but less than 200m³ of material, inclusive of any overburden, is excavated or processed as an aggregate in any continuous twenty-four hour period.

“Artisanal and small-scale gold mining” means gold mining conducted by individual miners or small enterprises with limited capital investment and production. (defined by Minamata convention)



TYPES OF MINING







Map of Guyana showing Mineral Properties and Mining Districts



Legend

- Current Mineral Licences
- Guyana main Rivers
- mining districts
- Guyana border Polygon

LICENSED SMALL AND MEDIUM SCALE GOLD AND DIAMOND MINING OPERATIONS IN THE MINING DISTRICTS OF GUYANA.



Dredges Registered and Operating December, 2018

Mining Districts							Total
1	2	3	4	5	6		
1	51	111	31	41	6	241	
1	50	61	45	33	1	191	
0	36	42	32	5	1	116	
0	22	33	12	21	2	90	
0	0	0	0	1	0	1	
0	6	8	8	3	0	25	
0	25	11	11	13	1	61	
0	21	27	10	22	0	80	
0	47	14	16	14	0	91	
1	31	51	39	12	2	136	
0	24	24	19	7	0	74	
0	7	10	5	3	1	26	
3	320	392	228	175	14	1132	

* STATISTICS FOR 2019 HAVE NOT YET BEEN MADE OFFICIAL BY ECONOMIST DEPARTMENT GGMC.

Gold and Diamond Declaration by Districts for the year 2018



District	December		Year to Date	
	Gold (oz)	Diamond (ct)	Gold (oz)	Diamond (ct)
1	-	-	133.79	175.96
2	34,148.96	471.66	252,817.03	5,900.51
3	22,314.88	1,273.77	164,701.48	44,188.02
4	14,148.35	983.68	111,242.57	11,187.15
5	9,656.99	-	81,563.49	-
6	-	-	2,614.60	659.07
Total	80,269.18	2,729.11	613,072.96	62,110.71

COMPARISON OF LARGE, MEDIUM AND SMALL SCALE GOLD MINES PRODUCTION 2018

GUYANA GOLD FIELDS, AURORA MINE PRODUCTION 2018 – **163,567.99 OZ./ 26.7%**

TROY RESOURCES, KAROUNI MINE PRODUCTION 2018 – **90,684.37 OZ./ 14.8%**

SMALL AND MEDIUM SCALE MINES PRODUCTION 2018 – **358,820.60 OZ./ 58.5% (6.1% GDP)**

MINING REGULATION & PROTECTED AREAS



Mining Activities are not allowed in areas designated as protected areas or Nature Parks in Guyana, in addition a 1Km Buffer Area around these designated P.A's are also not opened to mining activities.

“Buffer area” according to the Regulations, means land on either bank of a river or watercourse from the (mean) low watermark of the bank to 20 meters inland, and extending from the mouth of the river or navigable watercourse to its source;

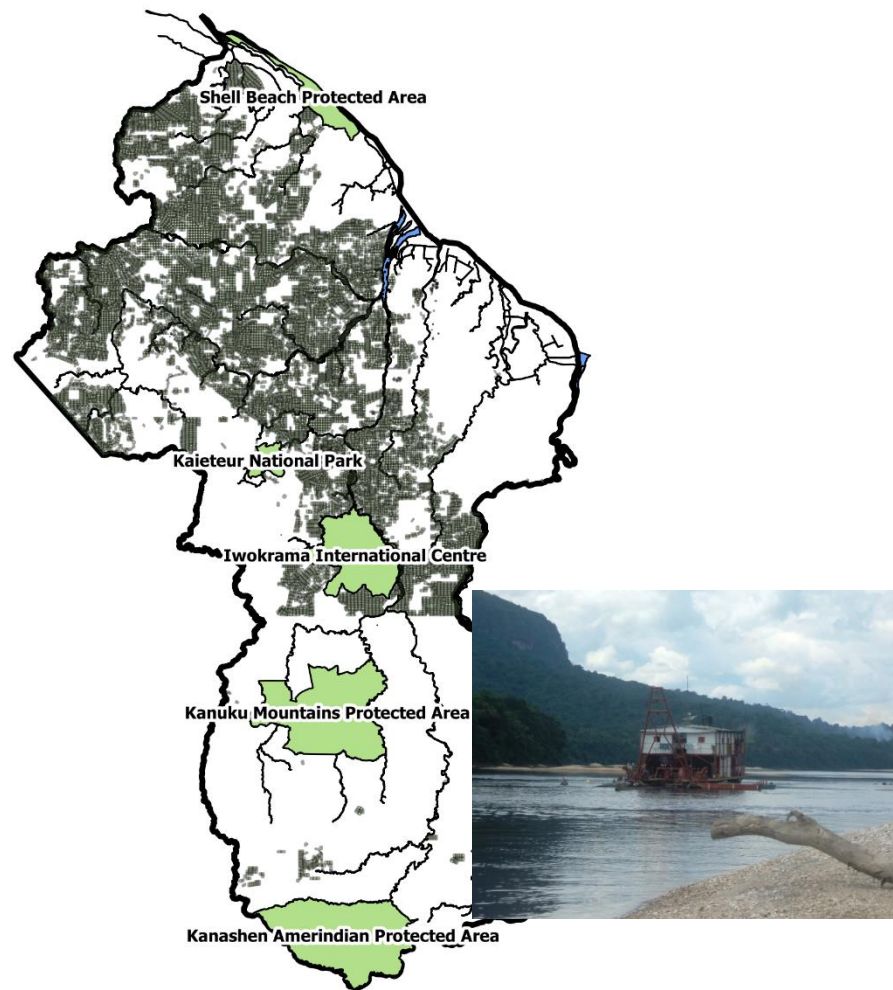
or any area within 30 meters of a public road; or 100 meters of approved residences, commercial or industrial development; **or 1 kilometre of an approved nature reserve or park.**

Section 251. (1) of the Mining Amendment Regulations, 2005 specifically states “No person shall conduct mining and quarrying activities in the following areas”-

(b) In specified nature reserves and parks where resource extraction is prohibited.

(2) A person who contravenes paragraph (1) commits an offence and shall be liable on summary conviction to a fine of G \$500,000 for a first offence and G\$1000,000 and one year imprisonment for a second offence and a ban of a maximum of five years from mining for subsequent offences.

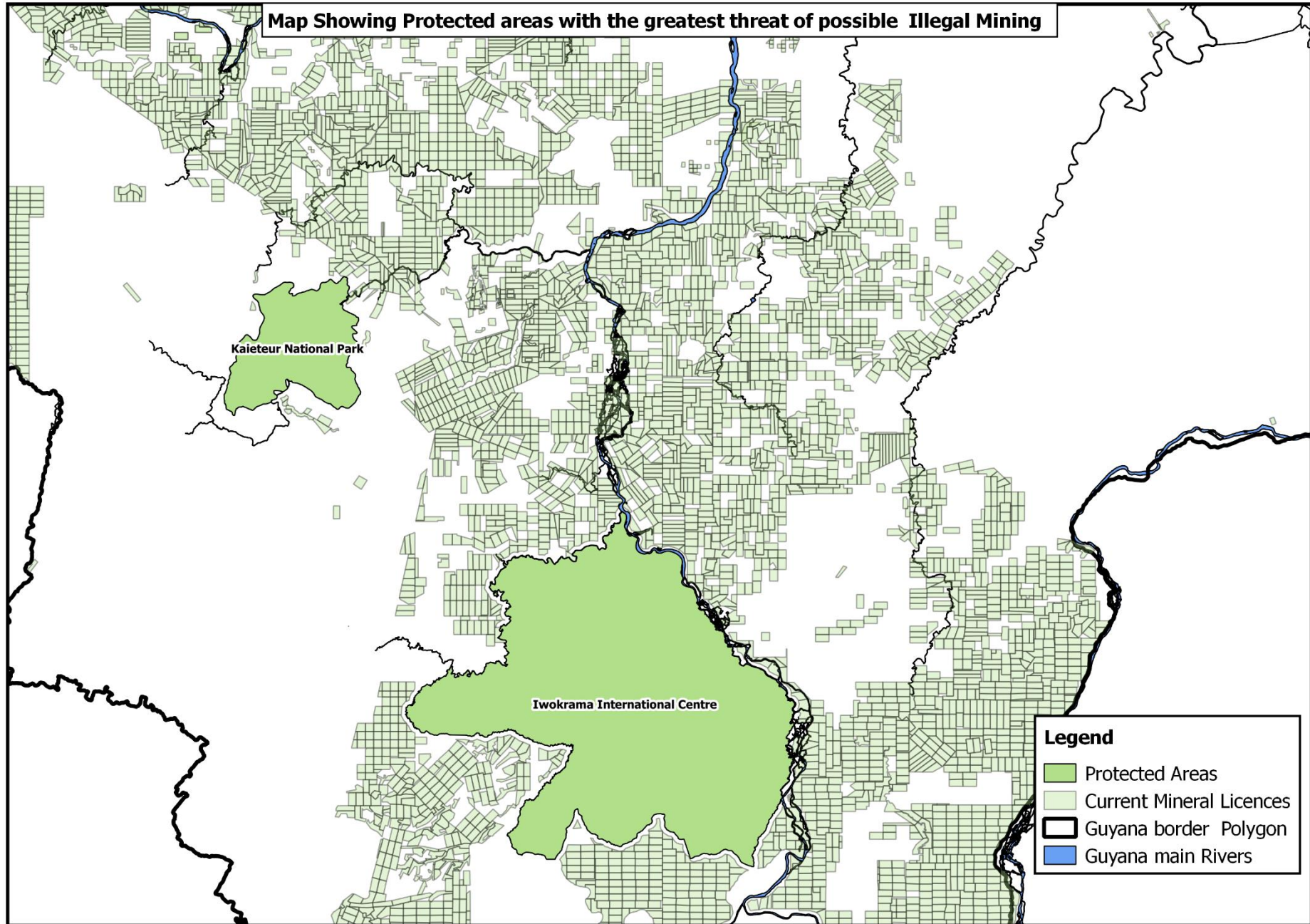
Map of Guyana showing current Mineral Properties and Protected Areas.



Legend

- Protected Areas
- Current Mineral Licences
- Guyana border Polygon
- Guyana main Rivers

Map Showing Protected areas with the greatest threat of possible Illegal Mining





STRATEGIES TO ERADICATE ILLEGAL MINING ACTIVITIES IN PA'S.

The GGMC in Collaboration with the PAC, and the Ministry of Natural Resource's Compliance Department, would conduct joint operations to monitor Protected Areas, remove and take legal action on illegal mining operations in P.A's when necessary.

Effective monitoring of PA's to stamp out illegal mining is dependent on a good working relationship between the partnering agencies and **communities** located in these PA's.

Miners must also be educated about the importance of having protected areas, and why they should be preserved and protected from illegal mining.

Strengthening the monitoring capacity of Community Appointed Rangers.

Stronger enforcement of the Mining Act and appropriate Regulations.



THANK YOU! DANK JE! MERCI!
QUESTIONS COMMENTS

